

BSNL Junior Telecom Officers-JTO 2005 Paper

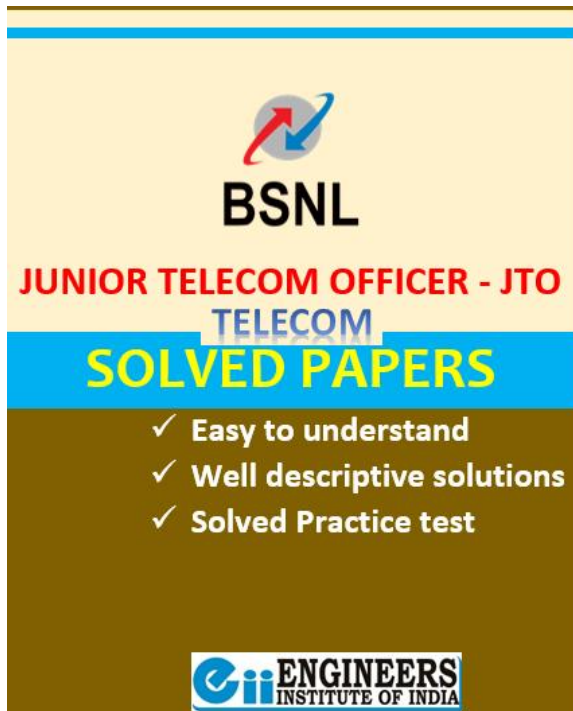
Engineers Institute of India-Eii offers exclusive coaching program for JTO preparations under team of JTO and working professional from BSNL.

JTO coaching program for BSNL JTO 2016 Vacancy

- ✓ JTO classroom coaching
- ✓ JTO Postal correspondence coaching
- ✓ JTO All India Test series

Highest selections in JTO with 28 rank under All India 50 Rank

To buy these books online email your Name, Phone at
eiidelhi@gmail.com Ph. 0-9990657855



BSNL Junior Telecom Officers-JTO 2005 Paper

Section – I : Technical

We have marked each question with a unique notation to understand its weightage of subject.

PE1 : Power Electronics

MI1 : Measurement Instrumentations

CS1 : Communication System

EMT1 : Electromagnetic Theory

MW1 : Microwave Engineering

EDC1 : Electronics Devices

AE1 : Analog Electronics

NT1 : Network theory

CT1 : Control System

MS1: Material Science

MP1: Microprocessor

DE1: Digital Electronics

CE1: Computer Engineering

- PE1
- (1.) Class C amplifier is mainly used
- (a) as an RF amplifier
- (b) as stereo amplifier
- (c) in communication sound equipment
- (d) as distortion generator
- PE1
- (2.) A single-phase voltage source square-wave inverter feeds pure inductive load. The waveform of the load current will be
- (a) Sinusoidal
- (b) Rectangular
- (c) Trapezoidal
- (d) Triangular
- PE1
- (3.) When a series LC circuit is connected to a dc supply of V volt through a thyristor, then the peak current through thyristor is
- (a) $V\sqrt{\left(\frac{C}{L}\right)}$
- (b) $V\sqrt{\left(\frac{L}{C}\right)}$
- (c) $V\sqrt{LC}$
- (d) V/\sqrt{LC}
- PE1
- (4.) In synchronized UJT triggering of an SCR, voltage V_0 across capacitor reaches UJT threshold voltage thrice in each half cycle so that there are three firing pulses during each half cycle. The firing angle of the SCR can be controlled
- (a) Once in each half cycle
- (b) Thrice in each half cycle
- (c) Twice in each half cycle
- (d) Four times in each half cycle
- PE1
- (5.) In dc choppers for chopping period T, the output voltage can be controlled by FM by varying
- (a) T keeping T_{ON} constant
- (b) T_{off} keeping T constant

- (c) T keeping T_{off} constant
 (d) None of these
- PE1
- (6.) A thyristor is in the forward blocking state. Then
 (a) All the 3 junctions are reverse biased
 (b) The anode and cathode junctions are forward biased but the gate junctions is reverse biased
 (c) The anode junction is forward biased but the other two, cathode and gate junctions are reverse biased
 (d) The anode and gate junctions are forward biased but the cathode junctions is reverse biased
- PE1
- (7.) A 3 phase semi converter can work as
 (a) Converter for $\alpha = 00$ to 1800
 (b) Converter for $\alpha = 00$ to 900
 (c) Inverter for $\alpha = 900$ to 1800
 (d) Inverter for $\alpha = 00$ to 900
- PE1
- (8.) A single-phase full bridge inverter can operate in load-commutation mode in case load consists of
 (a) RLC overdamped
 (b) RLC underdamped
 (c) RLC critically damped
 (d) None of these
- PE1
- (9.) In a thyristor, ratio of latching current to holding current is
 (a) 0.4
 (b) 1.0
 (c) 2.5
 (d) 6.0
- MI1
- (10.) A 300V full-scale deflection voltmeter has an accuracy of $\pm 2\%$. When it reads 222V, the actual voltage
 (a) Lies between 217.56V and 226.44V
 (b) Lies between 217.4V and 226.6V
 (c) Lies between 216V and 228V
 (d) Is exactly 222V
- MI1
- (11.) Which of the following types of transducers can be used for measurement of an angular position?
 (a) Circular potentiometer
 (b) Synchro
 (c) E-pick off
 (d) Both (a) and (b)
- MI1
- (12.) The temperature coefficient of resistance for a thermistor is
 (a) Low and negative
 (b) Low and positive
 (c) High and negative
 (d) High and positive
- MI1
- (13.) The dynamic characteristics of capacitive transducers are similar to those of a
 (a) Low pass filter
 (b) High pass filter
 (c) Notch filter
 (d) Band stop filter
- MI1
- (14.) A 0 to 200V dc moving coil voltmeter has a guaranteed accuracy of 0.75% of full scale reading. The voltage measured by instrument is 100V. The limiting error is
 (a) 3%
 (b) 2%
 (c) 1.5%
 (d) 0.75%
- MI1
- (15.) A digital frequency counter can be converted to a DVM by addition of a stage of suitable
 (a) Voltage controlled oscillator
 (b) D/A converter to it

- (c) Power amplifier to it
(d) Operational amplifier to it
MI
- (16.) A dry cell is a
(a) Time variant only
(b) Active device only
(c) Time-varying and active device
(d) None of these
MI1
- (17.) Q is
(a) Directly proportional to damping factor
(b) Inversely proportional to damping factor
(c) Directly proportional to the square of damping factor
(d) Directly proportional to the cube of damping factor
CS1
- (18.) The signal to quantization noise ratio in a PCM system depends upon
(a) Sampling rate
(b) Number of quantization levels
(c) Message signal band width
(d) Size of the transmission system
EMT1
- (19.) In any transmitting antenna system, efficiency primarily depends upon
(a) Ohmic losses of various conductors
(b) Radiation resistance
(c) Ground conductivity
(d) Atmospheric conditions
EMT1
- (20.) When the power of transmitter is doubled, then the field strength at a point will go up by
(a) 2dB
(b) 6dB
(c) 3dB
(d) None of these
CS1
- (21.) In a FM receiver, the channel bandwidth is around
(a) 10KHz
(b) 20KHz
(c) 75KHz
(d) 200KHz
EMT1
- (22.) The power carried by an electromagnetic wave traveling in free space changes with distance 'd' in proportion to
(a) d
(b) 1/d
(c) 1/d²
(d) d²
MW1
- (23.) One of the following which is not a wide band antenna is
(a) Marconi
(b) Helical
(c) Rhombic
(d) Folded dipole
MW1
- (24.) Out of the following the one that mostly reflects the high frequency radio waves is
(a) D
(b) E
(c) F1
(d) F2
EMT1
- (25.) Evanescent mode attenuation in a waveguide depends upon the
(a) 32GHz
(b) 8GHz
(c) $4\sqrt{3}$ GHz
(d) $8\sqrt{5}$ GHz
EMT1
- (26.) When the input impedance of loss-less transmission line is 100 ohms when terminated in a short circuit and 64 ohms when terminated in an open

circuit, then the input impedance of the line is

- (a) 80
 - (b) 164
 - (c) 36
 - (d) 56
- CS1

(27.) The channel required for EM telemetry is

- (a) The same as that required for AM telemetry
 - (b) Smaller than the required for AM telemetry
 - (c) 100 times that required for AM telemetry
 - (d) 10 times that required for AM telemetry
- MW1

(28.) The crossed dipoles in turnstile antenna are excited with voltage such that the phase shift between the voltage is

- (a) Zero
- (b) 45°
- (c) 90°

- (d) 180°
- MW1

(29.) The antenna most commonly used for TV broadcasting in the UHF is

- (a) Turnstile antenna
 - (b) Dipole antenna
 - (c) Yagi antenna
 - (d) Rhombic antenna
- EMT1

(30.) The dominant mode in a waveguide is characterized by

- (a) Longest cut off wavelength
 - (b) Shortest cut off wavelength
 - (c) Infinite attenuation
 - (d) Zero attenuation
- NT1

(31.) When two identical 3V, 1W batteries are connected in parallel with like polarity, then the Norton equivalent circuit of this combination is

- (a) 3A, 0.5W
- (b) 6A, 1W
- (c) 3A, 1W
- (d) 6A, 0.5W

NT1

(32.) For the network shown in Figure (a) and (b) to be duals, it is necessary that R' , L' and C' are respectively equal to

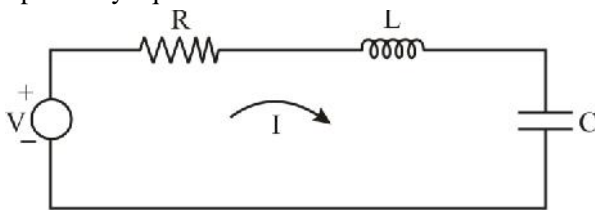


figure (a)

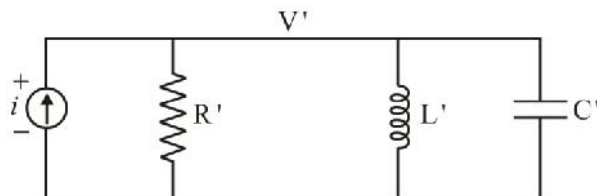
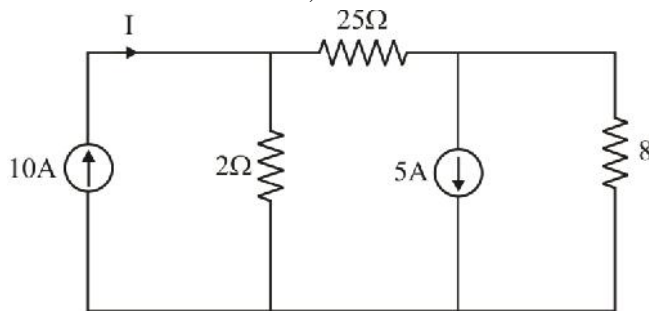


figure (b)

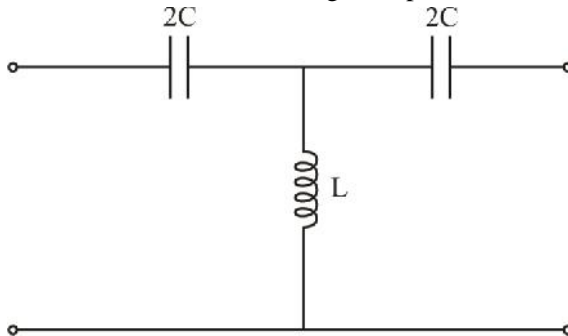
- (a) $\frac{1}{R}$, C and L
 (b) $\frac{1}{R}$, $\frac{1}{L}$ and $\frac{1}{C}$
 (c) R, $\frac{1}{L}$ and C
 (d) R, L and C
- NT1

(33.) In the circuit shown below, the value of I will be



- (a) 1A
 (b) 2A
 (c) 4A
 (d) 8A
- NT1

(34.) The network shown in the figure represents a



- (a) Band-pass filter
 (b) Low-pass filter
 (c) High-pass filter
 (d) Band-stop filter
- NT1

(35.) One of the following theorem which is the manifestation of the law of conservation of energy is

- (a) Tellegen's theorem
 (b) Reciprocity theorem
 (c) Thevenin's theorem
 (d) Norton's theorem

EDC1

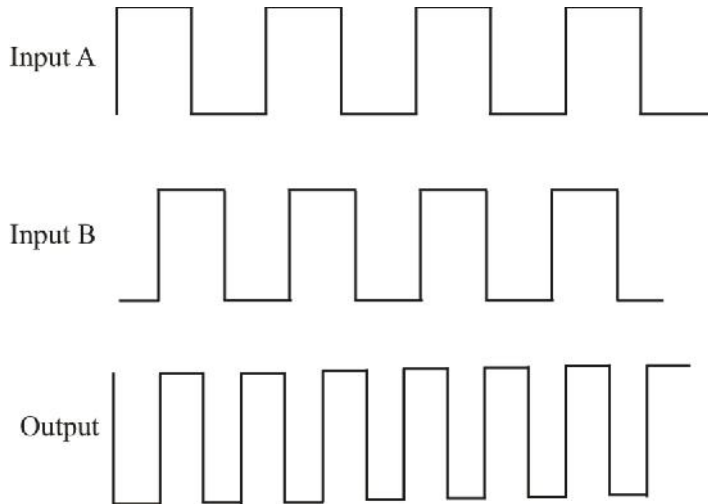
- (36.) The modulation of effective base width by collector voltage is known as early effect, hence reverse collector voltage,
 (a) Increases both alpha and beta
 (b) Decreases both alpha and beta
 (c) Decreases alpha but increases beta
 (d) Decreases beta but increase alpha
 EDC1
- (37.) The gain-band width product of a junction transistor is affected to a maximum extent by
 (a) Base collector parasitic capacitance
 (b) Base collector space charge layer capacitance
 (c) Base collector space charge layer capacitance
 (d) Base emitter diffusion capacitance
 EDC1
- (38.) One of the following statements which is correct regarding the two transistor model of the p-n-p-n four layer device is
 (a) It explains only the turn ON portion of the device characteristic
 (b) It explains only the turn OFF portion of the device characteristics
 (c) It explains only the negative region promotion of the device characteristics
 (d) It explains all the regions of the device characteristics
 MS1
- (39.) The resistance of the metallic wire would
 (a) Increase as the operating frequency increases
 (b) Decreases as the operating frequency increases
 (c) Remain unaffected on increasing the operating frequency
 (d) None of these
 EDC1
- (40.) The threshold voltage of a MOSFET can be lowered by
 (a) Using a thinner gate oxide
 (b) Increasing the substrate concentration
 (c) Both (a) and (b)
 (d) None of these
 MI1
- (41.) One of the following, which is not a transducer in the true sense, is
 (a) thermocouple
 (b) Piezoelectric pick up
 (c) Photo-voltaic cell
 (d) LCD
 EDC1
- (42.) In order to convert intrinsic semiconductors into extrinsic ones, the level of doping required is about
 (a) $1 : 10^3$
 (b) $1 : 1$
 (c) $1 : 10^8$
 (d) $1 : 10^5$
 MI1
- (43.) The input impedance of a CRO is nearly
 (a) Zero
 (b) Around 10 ohms
 (c) Around 100 ohms
 (d) Around one mega ohm
 MS1
- (44.) One of the following material which has negative temperature coefficient of resistance is
 (a) Brass
 (b) Copper
 (c) Aluminium
 (d) Carbon
 NT1
- (45.) The series equivalent resistance value in case of a lossy capacitor will be
 (a) Very small
 (b) Small
 (c) Large
 (d) None of these
 MI1

- (46.) In a cable the voltage stress is maximum at the surface of the
 (a) Sheath
 (b) Conductor
 (c) Insulator
 (d) None of these
 EMT1
- (47.) In electrical machines, laminated cores are used with a view to reduce
 (a) Hysteresis loss
 (b) Eddy current loss
 (c) Magnetic loss
 (d) None of these
 EDC1
- (48.) In a semiconductor the measurement of Hall coefficient provides information on the
 (a) Sign and mass of charge carriers
 (b) Mass and concentration of charge carriers
 (c) Sign of charge carries alone
 (d) Sign and concentration of charge carriers
 MS1
- (49.) The main purpose of plating the high frequency inductors and capacitors with silver is to
 (a) Reduce their dc resistances
 (b) Reduce their ac resistances
 (c) Increase their ac resistance
 (d) Increases their dc resistance
 EDC1
- (50.) For an abrupt junction varactor diode, the dependence of device capacitance (c) on applied reverse bias (V) is given by
 (a) $C \propto V^{1/3}$
 (b) $C \propto V^{-1/3}$
 (c) $C \propto V^{1/2}$
 (d) $C \propto V^{-1/2}$
 CE1
- (51.) For address modification purpose computer uses
 (a) Temp register
 (b) Index register
 (c) Stack pointer
 (d) Program counter
 MP1
- (52.) A pointer which points the memory address of the current or next instruction is
 (a) Index register
 (b) Temp register
 (c) Program counter
 (d) Stack pointer
 DE1
- (53.) Partly random and partly cyclic sequential access of memory is in
 (a) Magnetic tape
 (b) CD ROM
 (c) Magnetic Drum
 (d) Floppy
 DE1
- (54.) For designing half adder, we require
 (a) A NOT gate and a OR gate
 (b) A AND gate and a OR gate
 (c) Two AND gate
 (d) A AND gate and a X-OR gate
 DE1
- (55.) If JK inputs are tied together, the circuit reduces to
 (a) SR FF
 (b) D FF
 (c) T FF
 (d) JK FF
 DE1
- (56.) In active low logic, the logic 1 state corresponds to
 (a) High voltage level
 (b) Low voltage level
 (c) Negative voltage
 (d) Ground level

- DE1
- (57.) To obtain 16×8 memory using 16×4 memory. How many IC are required?
- (a) 16
(b) 2
(c) 4
(d) 8
- CE1
- (58.) In C programming character variable at a time holds
- (a) 1 byte
(b) 8 byte
(c) 16 byte
(d) 256 byte
- CE1
- (59.) How many type of control statements in C ?
- (a) 2
(b) 3
(c) 4
(d) 6
- MP1
- (60.) Is a non-maskable interrupt
- (a) RST 7.5
(b) RST 6.5
(c) RST 5.5
(d) TRAP
- MW1
- (61.) Negative resistance characteristics for its operation is used by
- (a) TWT
(b) Klystron
(c) Magnetron
(d) MASERS
- PE1
- (62.) Which power amplifiers has maximum efficiency?
- (a) Class A
(b) Class AB
(c) Class B
(d) Class C
- CS1
- (63.) A telephone channel has bandwidth B of 3KHz and SNR of 30dB. It is connected to a Teletype machine having 32 different symbols. The symbols rate required for errorless transmission is nearly
- (a) 1800 symbols/s
(b) 3000 symbols/s
(c) 5000 symbols/s
(d) 6000 symbols/s
- CS1
- (64.) The frequency deviation in phase modulation is
- (a) Independent of the modulating signal frequency
(b) Inversely proportional to the modulating signal frequency
(c) Directly proportional to the modulating signal frequency
(d) Inversely proportional to the square root of the modulating frequency
- PE1
- (65.) Mark out a wrong statement for two phase servo motor
- (a) The rotor diameter is small
(b) The rotor resistance is low
(c) The applied voltages are seldom balanced
(d) The torque speed characteristic is linear
- CS1
- (66.) Hamming codes are used for error detection and correction. If the minimum Hamming distance is M, then the number of errors correctable is
- (a) Equal to M
(b) Less than $M/2$
(c) Equal to $2M$
(d) Greater than M

DE1

- (67.) If the input and output signals of a block box are as given in the following figures, then the black box is a/an



- (a) Coincidence circuit
 (b) EX OR circuit
 (c) JK Flip Flop
 (d) R-S Flip Flop

MW1

- (68.) The amplification in parametric amplifiers used in microwave communication system is limited by

- (a) Type of biasing
 (b) Cassegrain antenna
 (c) Pyramidal horn antenna
 (d) Dipole antenna

MW1

- (69.) The best scanning system for tracking if the target has been acquired is

- (a) Lobe switching
 (b) Sequential lobbing
 (c) Conical scanning
 (d) Monopulse

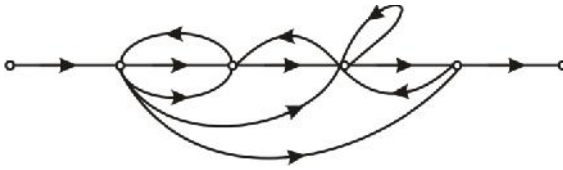
CS1

- (70.) Identify the wrong statement : Modulation is used to

- (a) Reduce the bandwidth used
 (b) Separate differing transmissions
 (c) Ensure that intelligence may be transmitted over long distances
 (d) Allow the use of practicable antennas

CT1

- (71.) The number of forward paths and individual loops in the signal flow diagram given below are



- (a) 3, 7
 (b) 4, 7
 (c) 5, 6
 (d) 5, 7

AE1

(72.) In a three phase half-wave rectifier, the peak inverse voltage will be

- (a) $\sqrt{6} E$
 (b) $\sqrt{3} E$
 (c) $2E$
 (d) $\sqrt{3/2} E$

CT1

(73.) In the formation of Routh's array the situation of a row of zeros indicates that the system

- (a) has symmetrically located roots
 (b) is not sensitive to variations in gain
 (c) is stable
 (d) unstable

CT1

(74.) Which of the following components can be used as a rotating amplifier in a control system?

1. An amplidyne
2. A separatively excited dc generator
3. A self-excited dc generator
4. A sychro

Select the correct answer using codes below:

- (a) 3 and 4
 (b) 1 and 2
 (c) 1, 2 and 3
 (d) 1, 2, 3 and 4

CT1

(75.) Mark the features of the break away point in the root locus of a closed loop control system with the characteristic equation $1 + KG_1(s)H_1(s) = 0$

1. It need not always occur only on the real axis
2. At this point $G_1(s)H_1(s) = 0$
3. At this point $\frac{dk}{ds} = 0$

Select the correct answer using codes below:

- (a) 1, 2 and 3
- (b) 1 and 2
- (c) 2 and 3
- (d) 1 and 3

CT1

- (76.) Considering a negative feedback system where $G(s) = \frac{1}{s+1}$, $H(s) = \frac{K}{s(s+2)}$

The closed loop system is stable for

- (a) $K > 20$
- (b) $15 < K < 19$
- (c) $8 < K < 14$
- (d) $K < 6$

NT1

- (77.) A composite voltage $V = 10\sin 100t + 10\cos 100t$ is applied across a series combination of a capacitor of $1\mu\text{F}$ and a resistance of $10\text{k}\Omega$. The average power dissipated in the resistance is

- (a) 5mW
- (b) 3.5mW
- (c) 4mW
- (d) 8mW

CS1

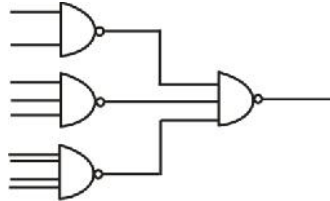
- (78.) The output signal amplitudes for 1's and 0's in an ADM transmission system
- (a) Fixed and the repetition rate is also fixed
 - (b) Fixed but the repetition rate is variable
 - (c) Variable and the repetition rate is also variable
 - (d) Variable but the repetition are fixed

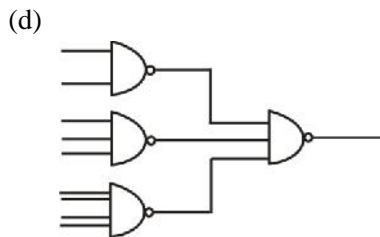
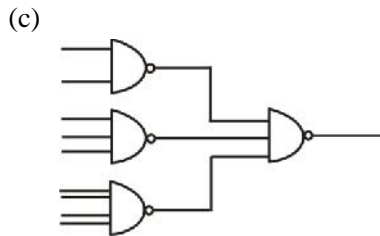
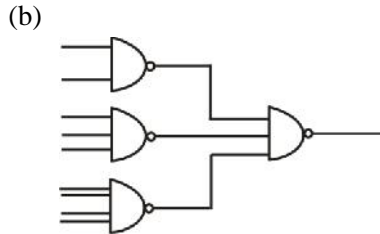
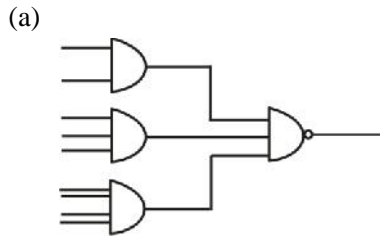
MP1

- (79.) The interface chip used for data transmission between 8086 and a 16-bit ADC is
- (a) 8529
 - (b) 8251
 - (c) 8255
 - (d) 8253

DE1

- (80.) The circuit shown in the figure given below equivalent to





AE1

(81.) The reverse saturation current I_{CO} in a transistor amplifier

- (a) Doubles for every 100C rise in temperature
- (b) Doubles for every 50C rise in temperature
- (c) Doubles for every 10C rise in temperature
- (d) Increases linearly with temperature

DE1

(82.) Mark out stop in the following

- (a) $AB + \bar{A}C + BC$
- (b) $(A+B)(A+C)(B+\bar{C})$
- (c) $AB + (\bar{B}+C)$
- (d) $\bar{A}C + BC + (A + C)$

- CS1
- (83.) In a PCM system, the number of quantization levels are 16 and the maximum signal frequency is 4KHz. The bit transmission rate is
- 64 K bits/sec
 - 32 K bits/sec
 - 32 K bits/sec
 - 16 K bits/sec
- DE1
- (84.) For a six bit ladder D/A converter which has digital input of 101001, the analog value is (assume $0 = 0V$ and $1 = + 10V$)
- 0.423
 - 0.552
 - 0.641
 - 0.923
- DE1
- (85.) Main memory are of two kinds
- ROM and RAM
 - Random and sequential
 - Primary and secondary
 - Central and peripheral
- CS1
- (86.) In FM if transmission bandwidth is doubled, then the SNR is
- Also doubled
 - Improved fourfold
 - Decreased by one fourth
 - Unaffected
- DE1
- (87.) The binary equivalent of 9.37510 is
- 1001.0112
 - 1101.1012
 - 1100.0112
 - 1111.0012
- DE1
- (88.) Identity wrong rule for binary subtraction?
- $0 - 0 = 0$
 - $1 - 0 = 1$
 - $1 - 1 = 0$
 - $0 - 1 = - 1$ with borrow of 1
- DE1
- (89.) When a large number of analog signals is to be converted to digital form, an analog multiplexer is used. The A to D converter suitable in this case will be
- Dual slope type
 - Up down counter type
 - Successive approximate type
 - Forward counter type
- DE1
- (90.) TTL circuits are used in main frame computers because of their
- Fast operating speed
 - Slow operating speed
 - Medium operating speed
 - None of the above
- DE1
- (91.) The process of conversion from an analog signal to digital signal is known as an
- Analog to digital conversion
 - Digital to analog conversion
 - Analog to analog conversion
 - Digital to digital conversion
- EDC1
- (92.) Identify the false statement about MOSFET. It can deplete in
- Depletion mode
 - Enhancement modes
 - Depletion and enhancement modes
 - Depletion only mode
- CS1
- (93.) For signal amplitude modulated to a depth of 100% by a sinusoidal signal power is
- Same as the power of unmodulated carrier
 - Twice as the power of unmodulated carrier
 - $3/2$ times the power of unmodulated carrier
 - $2/3$ times the power of unmodulated carrier

- CS1
- (94.) A signal having uniformly distributed amplitude in the interval (-ve , +ve) is to be encoded using PCM with uniform quantization. The signal to quantizing noise ratio is determined by the
- Dynamic range of the signal
 - Number of quantizing level
 - Sampling rate
 - Power spectrum of signal
- AE1
- (95.) An operational amplifier has a slew rate of 100v/microsecond. For a frequency of 10MHz the maximum value of the sine-wave output voltage will be
- 100V
 - $\frac{50}{f}$ V
 - 10V
 - 5V
- AE1
- (96.) For sustaining oscillations in a feedback amplifier. The loop gain should be
- Zero
 - Less than one
 - Greater than one
 - None of these
- AE1
- (97.) The feedback factor ' A_v ' is negative for negative feedback
- True
 - False
 - May or may not be
 - None of these
- CS1
- (98.) The signal/noise (S/N) ratio of an amplifier developing an output voltage of 10V and a noise voltage of 1mV is dB.
- 40
 - 100
 - 40
 - 80
- AE1
- (99.) The input impedance in a voltage shunt feedback is
- Decreased
 - Increased
 - Remains unchanged
 - None of these
- AE1
- (100.) Parasitic oscillations in amplifiers are caused by
- Negative feedback
 - Push-pull operation
 - Poor inter-stage coupling
 - Transistor inter-junction capacitance

Section-II : General Study

- (101.) What is 'Pimpri' famous for?
- Chemicals factory
 - Fertilizer factory
 - Antibiotics factory
 - Cement factory
- (102.) The hardest part in a tooth is
- Dental tubule
 - Dentine
 - Enamel
 - Pulp
- (103.) Panchayat polls held in Jammu and Kashmir after the gap of
- 40 years
 - 20 years
 - 33 years
 - 23 years
- (104.) In how many years is Khumbh mela held?
- 3
 - 5

- (c) 8
(d) 12
- (105.) In which year did Mahatma Gandhi launched “ first non co-operation movement”
(a) 1917
(b) 1918
(c) 1919
(d) 1920
- (106.) Tagore’s Gitanjali is
(a) A collection of poems
(b) A collection of short stories
(c) A collection of dramas
(d) A novel
- (107.) Where were the first Asian Games held?
(a) New Delhi
(b) Teheran
(c) Tokyo
(d) Bangkok
- (108.) Who wrote ‘Mudrarakshasa’?
(a) Kautilya
(b) Vishakhadatta
(c) Kalhana
(d) Kalidas
- (109.) Word Environment Day was observed on
(a) 5 May 99
(b) 15 May 99
(c) 5 June 99
(d) 5 July 99
- (110.) Titan is the name of the moon related to planet
(a) Uranus
(b) Neptune
(c) Saturn
(d) There is no such moon
- (111.) The best source of Vitamin A is
(a) Lima bean
(b) Carrot
(c) Tomato
(d) Orange
- (112.) Romario matched the career total of retired Zico by
(a) 830 goals
(b) 835 goals
(c) 834 goals
(d) 831 goals
- (113.) Chairman of the Cricket Board’s Zonal Academics
(a) N Venkat Rao
(b) Jag Mohan Dalmia
(c) Chandru Borde
(d) Kapil Dev
- (114.) Minister of parliamentary Affairs and Communications and Information Technology of Government of India is
(a) Uma Bharati
(b) Pramod Mahajan
(c) Murlu Manohar Joshi
(d) Uma Kashyap
- (115.) The first bullet train is assembled in
(a) South Korea
(b) North Korea
(c) Japan
(d) Malaysia
- (116.) Reema said that she had never ... a books she liked so much.
(a) Held upon
(b) Saw into
(c) Come across
(d) Viewed on
- (117.) Being punctual is necessary in your job. (Substitute the underlined word without changing its meaning).
(a) Attractive
(b) Free from worries
(c) On time
(d) Cheerful
- (118.) Sharma did not work So his master asked him to leave.
(a) Proper
(b) Properly
(c) Rightly
(d) Straight

(119.) He looked very grave. Which of the following words has the closest meaning to the word underlined.

- (a) Angry
- (b) Serious
- (c) Frightened
- (d) Upset

(120.) Let's go for a walk. The tag question required for this statement is

- (a) Shall we?
- (b) Should we?
- (c) Don't we?
- (d) Do we?

ANSWER KEY

1	2	3	4	5	6	7	8	9	10
a	d	a	a	c	b	a	a	c	c
11	12	13	14	15	16	17	18	19	20
d	c	b	c	d	c	b	b	b	c
21	22	23	24	25	26	27	28	29	30
d	a	a	d	d	a	c	c	c	a
31	32	33	34	35	36	37	38	39	40
d	a	b	c	a	a	d	d	b	a
41	42	43	44	45	46	47	48	49	50
d	c	d	d	b	b	b	d	b	d
51	52	53	54	55	56	57	58	59	60
b	c	c	d	c	b	a	a	c	d
61	62	63	64	65	66	67	68	69	70
d	c	d	a	b	b	a	b	c	a
71	72	73	74	75	76	77	78	79	80
b	b	a	b	d	d	a	d	c	d
81	82	83	84	85	86	87	88	89	90
c	b	d	b	a	c	a	d	b	a
91	92	93	94	95	96	97	98	99	100
a	d	c	c	b	c	a	d	a	d
101	102	103	104	105	106	107	108	109	110
c	c	d	d	d	a	a	b	c	c
111	112	113	114	115	116	117	118	119	120
b	d	a	b	a	c	c	b	b	a

To access and download BSNL JTO Papers & Solutions, visit at our website.

[BSNL-JTO 2009 question paper.](#)

[BSNL-JTO 2009 detailed Solutions.](#)

[BSNL-JTO 2005 question paper.](#)

[BSNL-JTO 2005 detailed Solutions.](#)

[BSNL-JTO 2002 question paper.](#)

[BSNL-JTO 2002 detailed Solutions.](#)

[BSNL-JTO 2001 question paper.](#)

[BSNL-JTO 2001 detailed Solutions.](#)